

We specialise in providing clients with the full range of building envelope solutions encompassing:

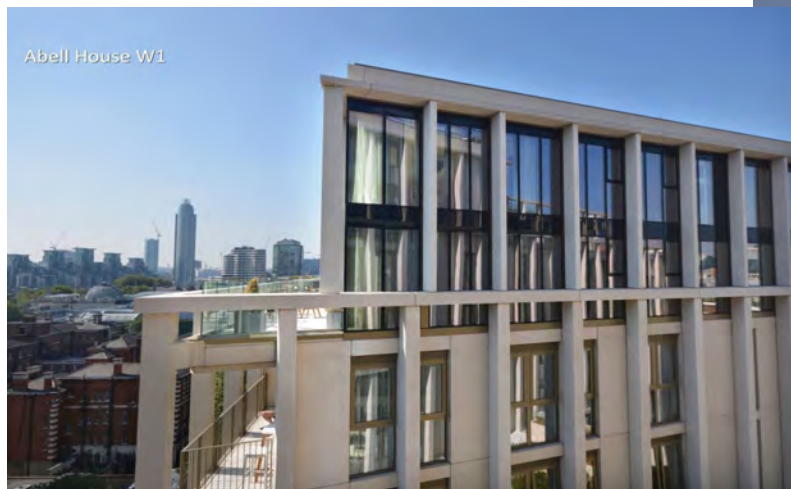
- aluminium curtain walling
- aluminium windows & doors
- aluminium rain-screen cladding
- atria walling
- atria roof glazing
- bolted and patch plate structural glass systems
- sheet metal products
- fire rated glazing



160 Aldersgate EC1



Greenwich University, School of Architecture



Abell House W1



Stratford Shopping City

In addition to the products listed above, which are all designed and manufactured in-house by the company, EAG recognise the clients need for a fully co-ordinated design and supply for the building envelope. To that end the company is pleased to incorporate associated products within the overall scope and controlled by experienced project managers.

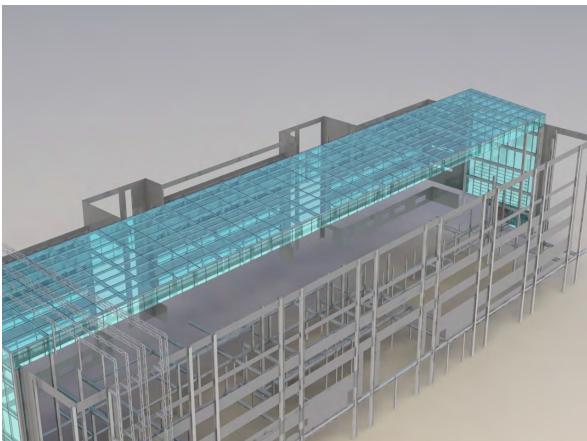
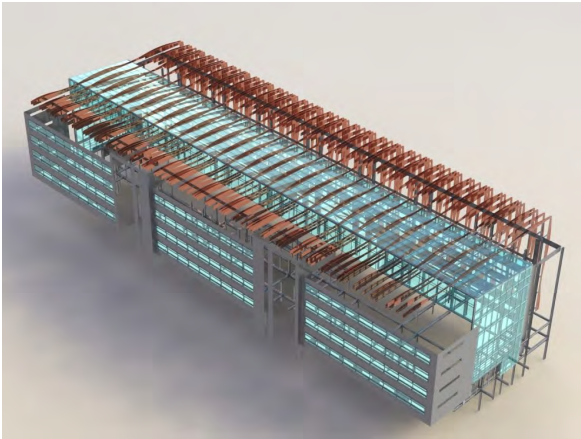
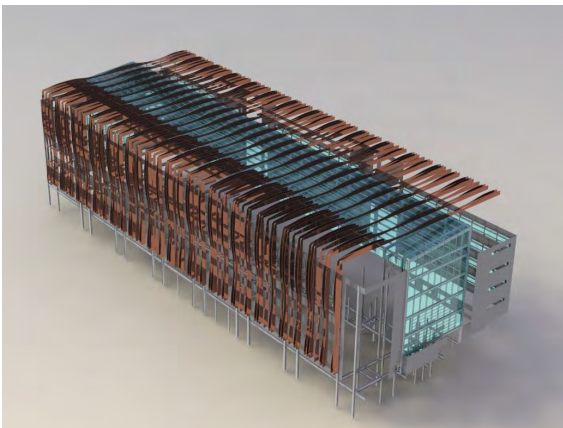
These include items such as:

- secondary steelwork
- proprietary cladding systems
- brise soleil
- automatic door systems
- louvres and smoke vents
- terracotta / timber / assorted metal and fibre C cladding

SALES & ESTIMATING

Within the pre-construction department there is an experienced estimating team skilled in developing and costing the best value engineered proposals.

Headed by the Pre-Construction Director, the department caters for Architects and Main Contractors alike, offering a full pre-construction design service were required.



DESIGN

The company has an in-house design department controlled and directed by experienced management to ensure that project designs are completed to a high standard in accordance with the project specification and programme. Continual staff training in product and computer systems is undertaken together with trainee programmes to ensure we develop our own staff for the future.

EAG not only uses the best of the proprietary systems available, but also has made substantial investment in computer-aided design technology specific for the glazing applications, and now possess SolidWorks computer software for the 3-D modelling of complex projects. The software incorporates all components within the model and therefore has the capability to produce manufacturing part prints, glass maps, hardware schedules, cutting lists and installation instruction diagrams automatically from the completed model.

The company designs the most complex projects on this 3-D modelling system, allowing the manufacture of mullions, transoms and window vent and outer frames to be undertaken on a fully automated Emmegi Quadra CNC line via a CAD/CAM link.



MANUFACTURE & FABRICATION

With 75,000 square feet of production space available across two manufacturing facilities, EAG can accommodate and meet production demand for the following processes: Profile fabrication and bending, sheet metal pressing and welding, mild steel fabrication, window and door assembly, unitised curtain wall assembly and polyester powder coating. To complement our offering in unitised curtain walling fabrication we have an in-house structural boning facility and are Sika approved applicators. We also offer bonding facilities for structurally glazed stepped edge vents in all profile systems and test rig facilities.

Significant investment in leading edge automated manufacturing, which includes an 'Emmegi Quadra' multi-axis CNC production system along with sheet metal guillotine/press brakes, in-house polyester powder coating plant ['Qualicoat' Standard] with 9 stage pre-treatment plant enabling EAG to control quality by reducing the sub-contracting of manufacturing processes. This in turn reduces cost and adds value in the form of guarantees. Continued investment in 2015 in a new LVD punch-press and LVD 4m press brake has significantly increased capacity.

BM Trada Certified

Exova BM TRADA is an independent, accredited certification body. Who provide UKAS accredited certification to all the major management systems standards (including, ISO 9001, ISO 14001, ISO 50001, OHSAS 18001, ISO 27001, ISO 22000) as well as BRC certification, chain of custody and sustainable supply chain certification, product and service certification and CE marking.

Using BM TRADA for your certification shows that your systems and products meet industry best practice. It helps make your business more competitive and opens doors to markets where certification is a requirement to trade.

For further information on the services our company can provide please visit our websites



www.eag.uk.com



www.multifab.uk.com

PROJECT AND CONSTRUCTION MANAGEMENT

Given the complex nature of the envelope projects that EAG undertakes, a strong team of experienced managers is maintained. Each new project is reviewed by the Construction Director and a Construction Manager, and allocated to a dedicated Project Manager who is responsible for the overall delivery of the contract from sales hand-over to completion, co-ordinating design, manufacture, outside sub-contractors and interfacing with other contractors on site, to ensure a successful contract.

The company also employs a team of site based managers who oversee the installation of the envelope works with primary responsibility for quality and the health and safety of the operatives undertaking the work.



GLAZING SYSTEMS

For window and curtain walling projects the company predominantly fabricates from the systems of Schüco International. However it should be noted that EAG are not tied to any specific company and will utilise any system which best meets the specification requirements of a particular project.

Structural glazing in the form of silicone bonded systems are available. Both proprietary and bespoke two and four-sided designs are offered for curtain walling and roof glazing applications, including those with enhanced requirements.

Bolted glass assemblies for facades, canopies and atria roofs are offered utilising cast or fabricated glazing spiders as required. Support can take the form of glass fins, tensioned cables or secondary steelwork, and always forms part of an integrated design and supply package.

In addition, EAG have launched their own 'Stax' system giving large pane high transparency facades by clamping the glass units in stainless steel castings. Each glass is stacked on the one below and allows the visual impact of a bolted arrangement without the expense of drilling the glass, allowing the use of standard double glazed units with products and coatings from any float glass manufacturer.

EAG have extensive experience of installing a comprehensive range of fire resistant glazing solutions to enable the designer to open up the building, creating the appearance of space and light whilst maintaining the strict fire requirements demanded by the Building Regulations and British Standards.





Current Projects	Client	Architect	Contractor	Value	Completion Date
The Royal College of Art (RCA)	Royal College of Art	Herzog & De Meuron	Kier Construction	TBC	TBC
Mayfair Park Residences	Clivedale London	PLP Architecture	Ellmer Construction	£3.8m	Aug 19
Gower Building Southampton Uni	University of Southampton	Feilden Clegg Bradley	BAM	£4.2m	April 19
Great Ormond St Hospital CRRDC	GOSHCC	Stanton Williams	Skanska UK	£4.2m	Mar 19
Embassy Gardens Ph2	Ballymore Group	Reddy Architecture + Urbanism	Ballymore Group	£8.2m	TBC 2019



Completed Projects	Client	Architect	Contractor	Value	Completion Date
30-32 Lombard Street EC3	McKay Securities	TP Bennett	ISG	£4.2m	Dec18
Greenwood Place	London Borough of Camden	PCKO	KIER Construction	£1.3m	Nov 18
BBC Wood Lane W12	Stanhope	Allford Hall Monaghan Morris	Mace	£17.6m	Oct 18
Campden Hill	Native Land Ltd/ Grosvenor	John McAslan	Brookfeild Multiplex	£4.6m	Feb 18
160 Aldersgate EC1	Mercer Real Estate	Fletcher Priest Architects	McLaren	£7.6m	Nov 17
8 Salisbury Square EC4	KPMG	TP Bennett	BAM	£8m	April 17
Capitol Way, Colindale	RLA Management - Neat Development.	Leach Rhodes Walker	Shepherd Construction	£1.5m	April 17
Cartwright Gardens	University of London	TP Bennett	Brookfeild Multiplex	£1.5m	Feb 17
Abell House SW1	Berkeley Homes	DSDHA	Berkeley Homes	£6.9m	Oct 16
Plot M0116, Greenwich Peninsula	Knight Dragon	DSDHA	Kier	£1.5m	Aug 16
Aldwych House, Reading	John Sisk & Son	Flanagan Lawrence	John Sisk	£3m	Aug 16
55 Victoria St SW1	Alchemi Group	Stiff & Trievillion	John Sisk	£1.7m	May 16
73 Charlotte St W1	Derwent London	DSDHA	Knight Harwood	£540,684	Dec 15
5-7 St Helens Place EC3	100 Bishopsgate	Eric Parry	Brookfield Multiplex	£1,2m	Late 15
Olympic Stadium Transformation Works	LLDC & Newham Council	Populus	Balfour Beatty	£3.9m	Aug 15
7-8 St James Sq SW1	Kish Twelve Ltd	Eric Parry	GallifordTry	£2,3m	May 15
4 Grafton Street W1S	TBA	Purcell Miller Tritton	Walter Lilly	£772,493	April 15
School of Architecture Greenwich University	Greenwich University	Heneghan Peng	Geoffrey Osborne	£7m	April 15
University of Essex Business School	University of Essex	BDP	Morgan Sindall	£724,656	April 15
Bishop's Court EC4	Henderson Global Investors	AHMM	Balfour Beatty	£1.1m	Late 14
Sheperds Bush Pavillion W12	Kosmopolito Hotels UK	BFLS London	Ardmore	£3,15m	Jun 14
Union Street SE1	Mount Anvil	MGM	Mount Anvil	£2m	Jun14
Watney Market Idea Store	Tower Hamlets Council	Bisset Adams	Geoffrey Osborne	£666.462	Jul 13



Completed Projects	Client	Architect	Contractor	Value	Completion Date
Southfields Community College	Wandsworth District Council	BDP	Lend Lease	£2,1m	Jan 14
Wornington Green	Royal Borough of Kensington & Chelsea	PRP	Ardmore	£975,000	May 14
Summit House W2	DF Real Estate	Wilmutte	ISG	£1.2m	Apr 14
1 Howick Place London SW1	Howick Office Sarl	Rolfe Judd	Kier London	£2,298,557	Oct12
Winchester University	Winchester University	Design Engine	Geoffrey Osborne	£479,502	Oct 12
Holland Park School	Royal Borough of Kensington & Chelsea	Aedas & Newtecnic	Shepherd Construction	£8,854,319	Oct 12
Northampton College Phase 2	Northampton College	Pick Everard	SDC	£838,500	Sep 12
Tidemill Primary School	London Borough of Lewisham	Pollard Thomas Edwards	Gallifordtry Partnership	£735,000	Aug11
Passmore School & Technology College	Essex County Council	Jestico + Whites	Willmott Dixon	£1,015,215	Aug11
Stratford Shopping City M2-6	Westfield Shoppingtowns Ltd	Buchan International	Westfield UK	£6,180,631	Sep11
Premier Inn Hotel Stratford S C	Whitbread Group Plc	AXIOM	Stratford City Developments	£2,250,000	Nov 11
Marks & Spencer's Norwich	Marks & Spencer's	Benoy	Ellmer Try	£536,685	July 11
West Thames College	West Thames College	Mackenzie Wheeler Architects	Geoffrey Osborne	£5,470,000	Jun 11
Anglia Ruskin University Camb	Anglia Ruskin University	BDP	Volkerfitzpatrick	£536,973	May 11
Corinthia Hotel	Corinthia Hotels Ltd	Seifert Ltd	Ardmore	£342,091	Apr 11
Marks and Spencer's Stratford S C	Westfield UK	Westfield Shoppingtowns Ltd	Stratford City Developments	£3,365,607	Nov 10
Ravensbourne College, London	Ravensbourne College	Foreign Office Architects	Bovis	£179,535	Oct 10
Four Seasons Hotel Park Lane	Four Seasons Hotels	Reardon Smith	Beck Interiors	£1,729,002	Feb 10
St. Martins Courtyard Covent Garden	Longmartins Properties	Smith Caradoc-Hodgkins	Wates Construction	£2,366,894	Oct 10
36-41 Gracechurch Street, London	Gracechurch Street London No1 Ltd	Gibberd	Costain	£1,908,905	Jun10
South Bank University Keyworth II, London	SBU	Grimshaw	Kier	£4,763,778	Jul 09
St Bartholomews Hospital, phase 1	Barts and the London NHS Trust	HOK	Skanska UK	£3,013,736	Jul 09
Wimbledon Centre Court	All England Lawn & Tennis Club	HOK	Gallifordtry	£3,100,000	Apr 09
Queen Mary Innovation Centre, London	University of London	NBBJ	Walter Lilly	£3,429,423	May 09
Gloucester Quays, Gloucester	Peel Holdings	Dyer Associates	Bovis	£7,500,000	Jun 09
8-13 Lime Street, London	PPG Metro Lime St Ltd	Rolfe Judd	ISG	£3,188,717	Jun 09
Belvedere House, Manchester	Wilson Bowden Developments	AEDAS	Wilson Bowden	£2,949,000	Dec 08
City Place, Gatwick	BAA Lynton	Hamilton Associates	Bowmer & Kirkland	£1,423,422	May 08



Completed Projects	Client	Architect	Contractor	Value	Completion Date
The Royal Institution of Great Britain, London	RIGB	Terry Farrell & Partners	ISG	£873,597	Jul 08
311-318 High Holborn, London	Ebble Developments	Sidell Gibson	Skanska UK	£826,579	Jul 08
UCL Roberts Building, London	UCL	Pascall & Watson	Geoffrey Osborne	£1,284,617	Feb 08
High Wycombe Town Center Extension	Stannifer Developers	Haskoll & Co	Multiplex	£9,100,000	Mar 08
LSE Roof & Curtain Wall, London	LSE	Grimshaw	Geoffrey Osborne	£1,164,784	Jan 08
Jennie Lee building, Open University	Open University	Swanke Hayden Conell	GallifordTry	£2,012,000	Jan 08
Litmus Building, Nottingham	Lace Market Properties	CPMG Architects	LaingO' Rourke	£3,012,746	Jul 07
Westminster Academy, London	DFES	AHMM	Gallifordtry	£2,663,796	Jul 07
Sheffield Northern General Hospital	NHS Foundation Trust	Sheppard Robson	Kajima	£1,400,000	Jan 07
HBOS Bank of Scotland	HBOS	DLG Architects	Faithful & Gould	£236,617	Apr 07
Royal Alexandra Children's Hospital, Brighton	Health Authority	BDP	Kajima	£3,500,000	Feb 07
Intercontinental Hotel, Hyde Park, London	Intercontinental Hotels	Readon Smith Ass.	John Sisk Beck Interiors	£2,400,000	Feb 07
College of North West London Kilburn	DFES	Frederick Gibberd & Partners	Mansell	£736,431	Feb 07
Royal Marsden Hospital, Surrey	NHS Foundation Trust	Ansell & Bailey	Mansell	£314,000	Jan 07
Time & Space, Royal Observatory, Greenwich	The Royal Maritime Museum	Allies & Morrison	Gardiner & Theobald	£240,000	Jan 07
Walbrook Wharf, London	Corporation of London	Swanke Hayden Conell	Kajima	£1,300,000	Dec 06
Park Inn Heathrow	Rezidor SAS Hospitality	Frederick Gibberd & Partners	Skanska UK	£494,000	Nov 06
The Round House, Camden, London	The Round House Trust	John McAslan & Partners	Tolent Construction	£1,609,619	Jun 06
Whitelands Park, Putney	Crest Nicholson	Scott Brownrigg	Crest Nicholson	£490,000	Jun 06
The Triangle The Stables Market, Camden	Stanley Sidings Ltd	ESA	Stanley Sidings Ltd	£1,668,000	Jun 06
166 High Holborn	Travelodge	EPR Partnership	GallifordTry	£1,800,000	May 06
Carrow Bridge, Norwich	Taylor Woodrow	RHWL	Jacksons	£3,000,000	May 06
DLR City Airport Station, London	DLR City Airport	Weston Williams	Amec via Astec Projects	£1,033,000	Nov 05
11-17 Worpole Road, Wimbledon	Mackay Securities Plc	The Louis de Soissons Partnership	Wates Construction	£690,000	Aug 05



Completed	Client	Architect	Contractor	Value	Completion
Great Ormond Street, London	Great Ormond St Hospital for children NHS trust	Anshen Dyer	HBG Construction	£1,166,000	Oct 05
Tempus Wharf Phases 2 & 3, London	Berkeley Homes	BUJ	Berkeley Homes	£710,000	Aug 05
Wimbledon All England Lawn Tennis Club	All England Lawn Tennis Club	HOK	GallifordTry	£621,000	Jun 05
CCIB Kings College, London	Kings college	NBBJ	Walter Lilly Construction	£2,100,000	Mar 05
Maida Vale, London	Crest Nicholson	ATP Partnership	Crest Nicholson	£605,000	Jun 05
Golden House, London	Sir Richard Sutton's Settled Estates	Rolfe Judd	Faithdean	£700,000	Aug 05
Weatherall Institute of Molecular Medicine, Oxford	John Ratcliffe	Berman Guedes & Stretton	Walter Lilly Construction	£673,000	Sep 05
Plymouth University	Plymouth University	Nicholas Burwell	Cowlin Construction	£664,000	Nov 04
City & Islington College London	City & Islington College	Wilkinson Eyre	William Verry	£800,000	Mar 05
New Providence Wharf, London	Ballymore Properties	Skidmore Owings & Merrill	Ballymore Properties	£2,800,000	Jul 04
Hans Crescent, London	Ropemaker Properties	Paul Davis & Partners	GallifordTry	£1,038,000	Jul 04
Radisson Hotel, Stansted	BAA	Aukett	Skanska UK	£2,300,000	May 04
Station Road, Edgware	Wragg & Co	Grafik Architects	Wilson Connelly	£600,000	May 04
Telecom House, Crouch End	Berkeley Homes	Hurley Robertson & Associates	Berkeley Homes	£1,032,000	May 04
River Lane, Petersham	Berkeley Homes	Terry Farrell & Partners	Berkeley Homes	£846,000	Jan 04
9 Albert Embankment, London	Berkeley Homes	Assael	Berkeley Homes	£1,634,000	Sep 03
Juxon House, St Pauls London	Standard Life	Sidell Gibson	Bovis Lend Lease	£1,100,000	Sep 03
The New Library, Milton Keynes	Open University	Swanke Hayden Connell	GallifordTry	£1,200,000	mid 03
Chadwell Heath	Nichols & Clarke	Tooley & Foster	Trak Construction	£500,000	Aug 03
Centre Point, London	Blackmore Developments	Gaunt Frances Architects	Second London Wall	£800,000	Aug 03
West End Quay, London	West End City Ltd	Broadway Malyan	Wates Construction	£5,020,000	Jul 03
49 Sydenham Road, Croydon	Taywood Properties	Rolfe Judd	M.J.Gleeson	£1,100,000	end of 01
Norfolk & Norwich Hospital, Norwich	Octagon Healthcare	Anshen Dyer	Laing O'Rourke	£2,800,000	end of 01

TRADE ASSOCIATES	
<p>The Contractors Health and Safety Assessment Scheme www.chas.co.uk</p>	
<p>Achilles-Building Confidence Accreditation www.achillies.com Cert No. 300169/3038</p>	
<p>Centre for Window and Cladding Technology www.cwct.co.uk</p>	
<p>Constructionline Accreditation www.constructionline.co.uk Registration No. 151941</p>	
<p>British Standards Institute www.standardsuk.com Cert No. EMS 682931</p>	



LOCATION

EAG is situated in Mildenhall a few minutes away from the main A11.

From the A14. Near Newmarket turn onto the A11 North (Norwich), then follow directions from the A11(South)

From the A11 (South). Continue towards Norwich on the A11 until reaching the 5 ways roundabout at Barton Mills. Turn off towards Mildenhall (A1101). Travel along the A1101 for 2 miles passing over the first mini roundabout and turning right at the second mini roundabout. Then in a quarter of a mile turn left into Holbourn Ave and then first right into Chiswick Ave. EAG is situated at the end of Chiswick Ave.



CONTACT US



8 Salisbury Square EC4

